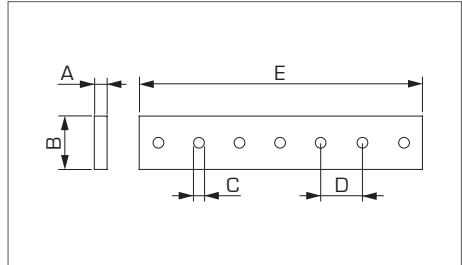


Barre filettate in rame

ETP threaded copper bars



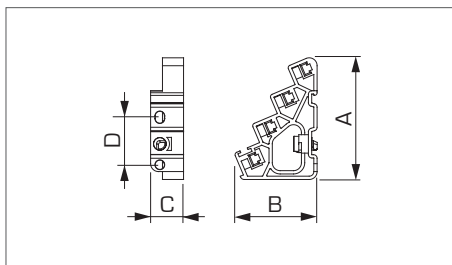
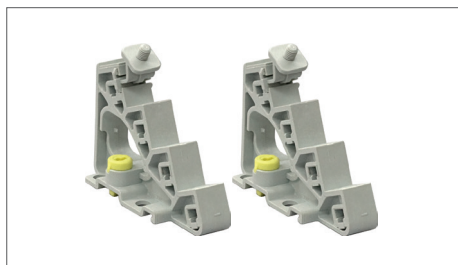
Articolo Item	Corrente nominale Rated current	Dimensioni Dimensions				
		A mm	B mm	C mm	D mm	E mm
BCF122	65A	2	12	M5	19	2000
BCF124	125A	4	12	M5	19	1750
BCF154	160A	4	15	M5	19	1750
BCF205	250A	5	20	M6	19	1750
BCF256	400A	6	25	M6	19	1750

Barre Bars	Rame Copper
---------------	----------------

Direttive RoHS2 RoHS2 directive	2011/65/EU RoHS2
------------------------------------	------------------

Supporti per barre filettate max 16 mm

Supports for copper bars max 16 mm



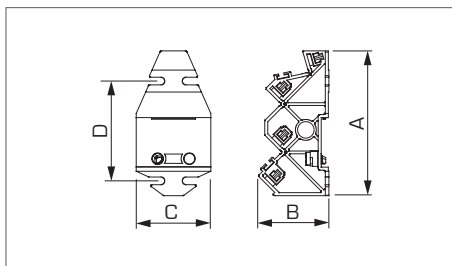
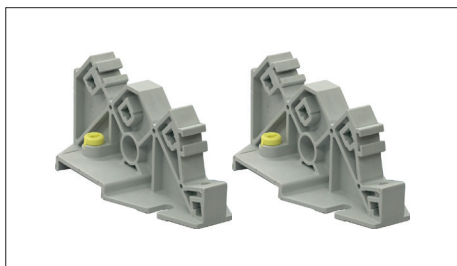
Articolo Item	Per barre larghezza max For bars with max width	Materiale Material	Colore Colour	Fissaggio Fixing	Dimensioni Dimensions			
					A mm	B mm	C mm	D mm
BB416	16 mm	Poliamide Polyamide	Grigio Grey	Con viti o su guida DIN With screws or on DIN	90	57	25	37

Temperatura di esercizio Operating temperature	+85°C
Resistenza al calore Heat resistance	+130°C

Supporto isolante Insulating body	Poliamide Polyamide
Autoestinguenza Self-extinguishing	850°C
Norme Standards	EN 60998-1:2004 EN 60998-2-1:2004
Direttive RoHS2 RoHS2 directive	2011/65/EU RoHS2

Supporti per barre filettate max 20 mm

Supports for copper bars max 20 mm



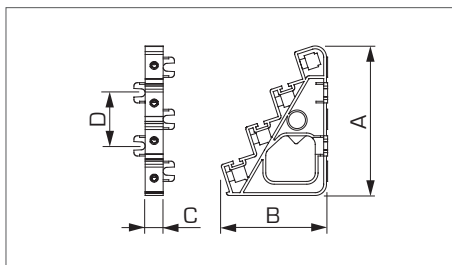
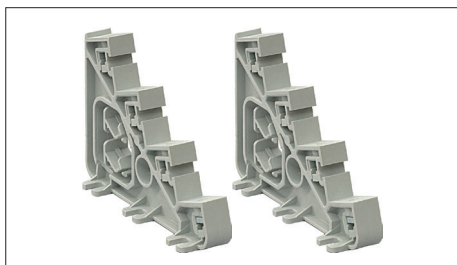
Articolo Item	Per barre larghezza max For bars with max width	Materiale Material	Colore Colour	Fissaggio Fixing	Dimensioni Dimensions			
					A mm	B mm	C mm	D mm
BB420	20 mm	Poliamide Polyamide	Grigio Grey	Con viti o su guida DIN With screws or on DIN	132	59	67	91

Temperatura di esercizio Operating temperature	+85°C
Resistenza al calore Heat resistance	+130°C

Supporto isolante Insulating body	Poliamide Polyamide
Autoestinguenza Self-extinguishing	850°C
Norme Standards	EN 60998-1:2004 EN 60998-2-1:2004
Direttive RoHS2 RoHS2 directive	2011/65/EU RoHS2

Supporti per barre filettate max 25 mm

Supports for copper bars max 25 mm



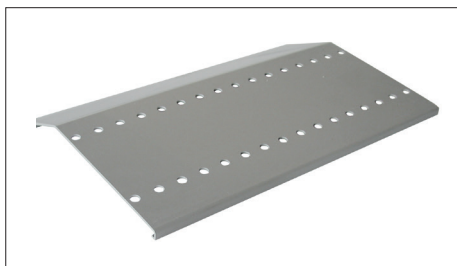
Articolo Item	Per barre larghezza max For bars with max width	Materiale Material	Colore Colour	Fissaggio Fixing	Dimensioni Dimensions			
					A mm	B mm	C mm	D mm
BB425	25 mm	Poliamide Polyamide	Grigio Grey	Con viti su piastra With screws or plate	130	89	35	47

Temperatura di esercizio Operating temperature	+85°C
Resistenza al calore Heat resistance	+130°C

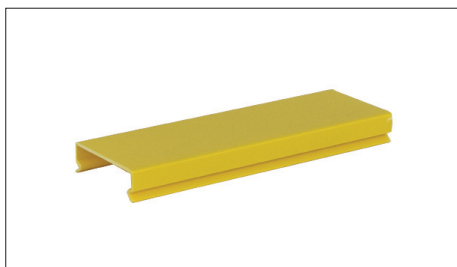
Supporto isolante Insulating body	Poliamide Polyamide
Autoestinguenza Self-extinguishing	850°C
Norme Standards	EN 60998-1:2004 EN 60998-2-1:2004
Direttive RoHS2 RoHS2 directive	2011/65/EU RoHS2

Accessori per ripartitori

Accessories for distribution frames



Articolo Item	Descrizione Description	Per supporti For supports
BB2150		BB416
BB2200	Coperchio di protezione Protection cover	BB420
BB2250		BB425



Articolo Item	Descrizione Description	Lunghezza Length
BD536	Protezione guida DIN Din rail protection	2000 mm



Articolo Item	Descrizione Description	Dimensioni Dimensions mm
BBM59	N. 100 viti e rondella N. 100 screws and washer	M5x9
BBM590	N. 100 viti N. 100 screws	M5x8
BBM610	N. 100 viti e rondella N. 100 screws and washer	M6x10
BBM812	N. 50 viti e rondella N. 50 screws and washer	M8x12