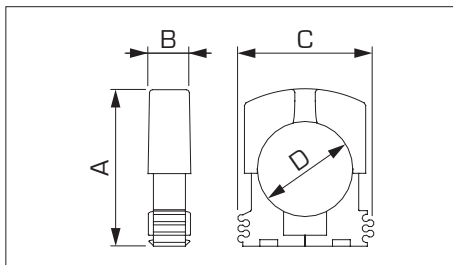
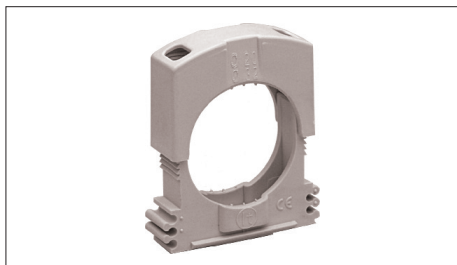


Fissatubo a pressione

Pressure clips



Articolo Item	Per tubi For pipes	Fissaggio Fixing	Base con asola Base with hole	Dimensioni Dimensions			
				A mm	B mm	C mm	D mm
SPG2036	Ø 12/20 mm	Con vite o su guida DIN With screw or Din rail	4 x 8,5 mm	41	14	34	12/20
SPG2037	Ø 20/32 mm	Con vite o su guida DIN With screw or Din rail	4 x 8,5 mm	53	14	46	20/32
SPG2038	Ø 32/50 mm	Con vite o su guida DIN With screw or Din rail	4 x 8,5 mm	72	14	64	32/50

Temperatura di esercizio Operating temperature	-40°C +125°C
Resistenza al calore Heat resistance	+650°C
Materiale Material	Polipropilene caricato FV Polypropylene FV
Colore Colour	Grigio RAL7035 Grey RAL7035

Viti consigliate Recommended screws	Sotto testa piana Flat bottom head
Autoestinguenza Self-extinguishing	650°C
Norme Standards	EN 61386 IEC62275
Direttive RoHS2 RoHS2 directive	2011/65/EU RoHS2